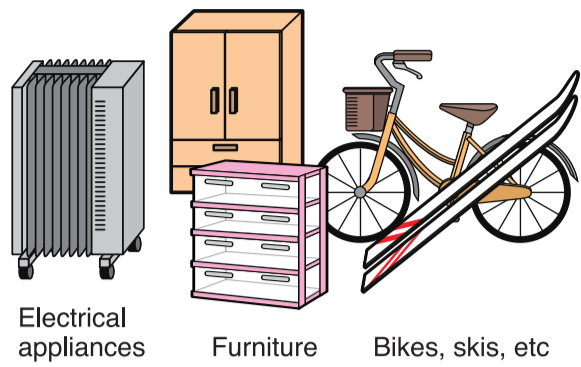


Oversized Household Waste

By Reservation Only

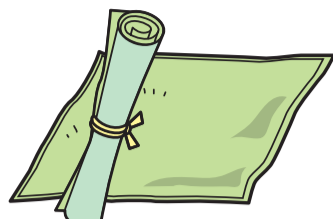
① Example Items

Items that don't fit in official City trash bags



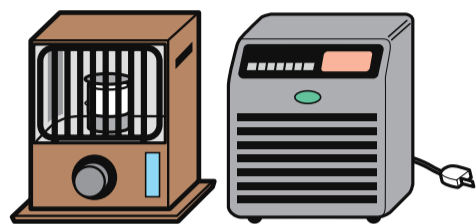
Electrical appliances Furniture Bikes, skis, etc

Large textiles, etc



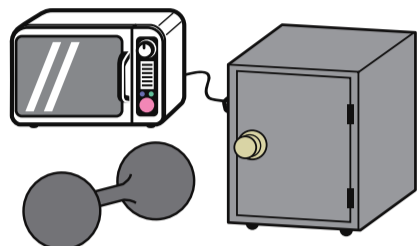
Carpets, etc

Fire hazards



Kerosene space heaters
*Kerosene & batteries MUST be removed prior to disposal

Hard materials



Microwaves, safes, dumbbells, etc

② Disposal

Reservation by phone, FAX & internet

① Make a Reservation

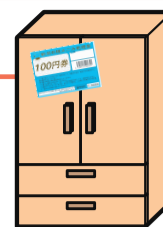
Collection date and fees will be assigned at the time of reservation.

② Purchase Oversized Waste Disposal Stamps

Stamps are available in ¥100, ¥200, ¥300 & ¥500 amounts from designated retailers.

③ Take Waste to the Collection Site

Apply disposal stamps and bring to the collection site on the assigned pick-up day.



Contact

Tel

● Oversized Waste Call Center (Japanese Language)
025-290-5353

Hours: 9 to 5 Mon through Sat (closed on holidays and Dec. 29~Jan. 3)

Internet

Reservations can be made on the City website

<http://www.sodai.city.niigata.jp>

(Link to reservation form)
Available 24hr/d

FAX 025-290-5371 Only people with disabilities

Attention

Write your name & reservation number on the stamp and put it somewhere easily visible. Bring trash to the collection point by 8am on the pick-up day. Please do not put trash out prior to the pick-up day (e.g. the night before, etc).

*Trash will only be collected if marked with a disposal stamp.

Oversized Waste Disposal Stamps

Oversized Waste Disposal Stamps are available at Niigata City offices and select supermarkets, convenience stores, and other retailers in the greater Niigata City area.

Niigata City Maki Area



Stamps

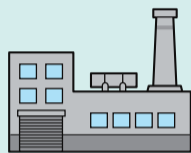
Official retailer mark

Bulk Disposal of Household Waste (Moving, Cleaning)



① Direct disposal at local waste management plant

- Processing fee: 60JPY/10kg (to be paid at the facility)
- Hours vary by facility. Please check ahead of time.



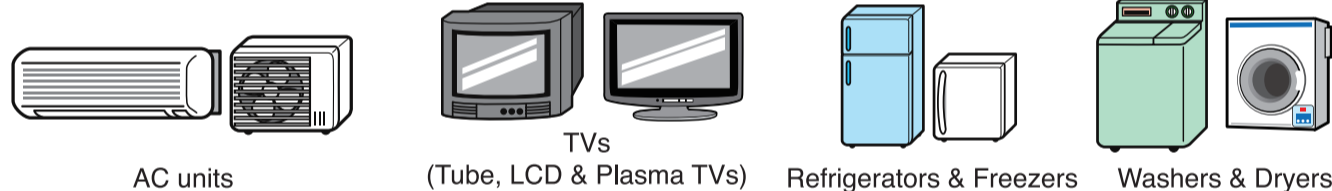
② Use a City-designated collection service.

- If you can't take your appliances to the drop off site, please use a professional collection service (separate fees apply). The Waste Disposal Management Division can recommend a collection service if needed. Tel 025-226-1407

Waste Not Collected by the City of Niigata (will not be collected from collection sites)

Electrical Appliances

● Please recycle at a retailing site.



AC units TVs (Tube, LCD & Plasma TVs) Refrigerators & Freezers Washers & Dryers

● Appliance Drop Off

*Be sure to pay the necessary recycling fees at a post office prior to taking your appliances to the delivery site. (Post office processing fees apply)

Delivery Site	(株)豊和商事 新潟支店 (Howa Shoji Niigata Branch Office)	日本通運(株)新潟物流事業所 (Nippon Express Niigata Physical Distribution Office)
Address & Tel	中央区美咲町2-2-63 (2-2-63 Misaki-cho, Chuo-ku) 025-284-0131	中央区万代3-5-26 (3-5-26 Bandai, Chuo-ku) 025-244-9121

● Collection Services

If you can't take your appliances to the drop off site, please use a professional collection service (separate fees apply). The Waste Disposal Management Division can recommend a collection service if needed. Tel 025-226-1407

Recycling Fee

Price reference for major manufacturers

*As of July 2013 (tax included)

AC units		1,575 JPY
TVs	15" or smaller	1,785 JPY
	16" or larger	2,835 JPY
Refrigerators & Freezers	170 liters or less	3,780 JPY
	171 liters or more	4,830 JPY
Washers & Dryers		2,520 JPY

Please confirm with retailers, or use the RKC electrical appliance recycling website

Tel 0120-319-640

www.rkc.aeha.or.jp

Collection fees vary by retailer

*Please contact retailers for prices.

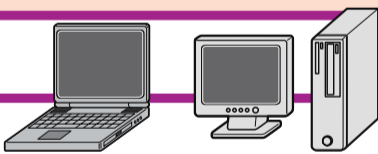
*Collection fees only apply when using retailer pick-up services

Personal Computers

Recyclable Parts / Collection/Recycling Fees (major manufacturers)

Recyclable Parts	Collection/Recycling Fees (major manufacturers)
Desktop Computer Modems, LCD Desktop Computers, Laptops, Liquid Crystal Displays	3,150 JPY/unit
CRT Displays, CRT Display Desktop Computers	4,200 JPY/unit

Standard auxiliary appliances (mouses, keyboards, speakers, cables, etc) may also be collected.



*As of July 2013 (tax included)

Collection is not offered for...

- Word Processors
- Printers/Scanners
- External Drives & other peripherals



Products with this mark can be collected & recycled free of charge.

▲ [PC Recycle Mark]

As of June 2013 Certain PCs can also be recycled at small household electronic recycle sites (Free)

Recyclable PCs

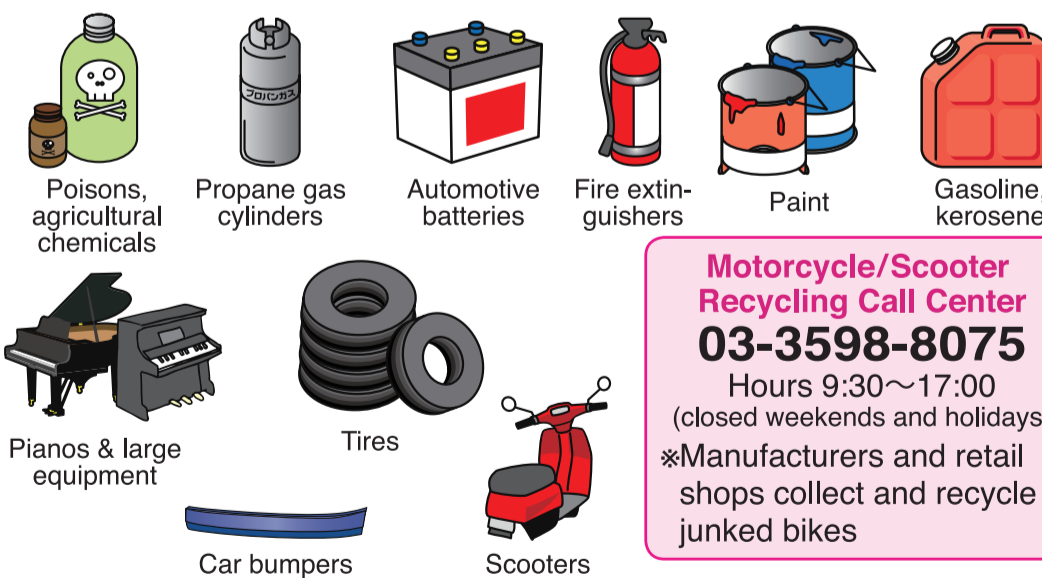
PCs that fit in the collection box (15cm tall x 35cm wide x 20cm deep or smaller)

For information regarding collection box locations, etc see the City website.

http://www.city.niigata.lg.jp/kurashi/gomi/recycle/koden_recycle/index.html

- Please contact the manufacturer to have these items recycled.
- For a manufacturer's contact information, or questions about collection of original computers:
PC3R Promotion Association Tel 03-5282-7685
www.pc3r.jp

Please Contact Retailers to Dispose of the Following Items



Motorcycle/Scooter Recycling Call Center

03-3598-8075
Hours 9:30~17:00 (closed weekends and holidays)
*Manufacturers and retail shops collect and recycle junked bikes

Please Consult Your Medical Care Facility for Disposal of the Following

Needles that have been in contact with blood/other medical items (including insulin pens and tools for measuring blood sugar, etc)

Waste Resulting from Contract Work

Have the contractor dispose of any waste resulting from construction (ex: gas piping/appliances, bath tubs, concrete, fences, etc).

Commercial Waste (waste created by business activity can not be disposed of at collection sites)

Commercial waste is the responsibility of the business that created it. Businesses must bring such waste directly to a waste management plant or request pick-up from a designated collection service.